

Buses will replace trains between Three Bridges and Brighton / Lewes on Sunday, Sept 28, and the weekends of Oct 4, 5 ; Oct 11, 12; Oct 18, 19; and Nov 15, 16.

Check before you travel

A frequent bus service will link Three Bridges to Brighton and Lewes, with a train service for the rest of your journey. Intermediate stations will also be served by buses. The buses will be slower than your normal train service so please allow extra time for travel.

Getting where you are going

All buses will be timetabled to link with trains and will be displayed on station departure boards and on www.nationalrail.co.uk; www.southernrailway.com and www.thameslinkrailway.com

There will be multiple buses leaving at each departure to provide enough seats for everyone who wants to travel.



What time?

Three Bridges and Brighton / Lewes will be linked by a mixture of non-stop and all-stations buses.

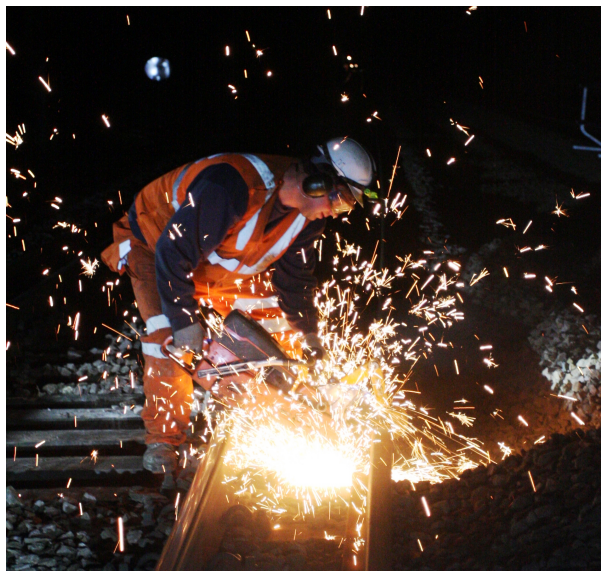
- On Saturdays, Three Bridges and Brighton will be linked by four non-stop bus services per hour, and four all-stations buses per hour - in both directions. There will be a slightly reduced service in the early morning and late evening. Each departure will be served by multiple buses.
- On Sundays, Three Bridges and Brighton will be linked by four non-stop bus services per hour and three all-stations - in both directions. Each departure will be served by multiple buses.
- Three Bridges and Lewes will be linked by two non-stop bus services and one all-stations service per hour on both days, in both directions.

Please note For customers travelling to/from Brighton only, there will also be a train service between Brighton and London Victoria via Littlehampton. Journey times will be longer than the bus service, but it will provide a direct link for those who wish to travel by train.

Other stations

- Preston Park, Hassocks, Burgess Hill, Wivelsfield, Haywards Heath and Balcombe will be served by stopping buses from Three Bridges to Brighton and return.
- Plumpton and Cooksbridge will be served by stopping buses from Three Bridges to Lewes and return, in addition to Haywards Heath and Wivelsfield.
- Passengers travelling from Seaford, Newhaven, Eastbourne and intermediate stations towards London will need to change to a bus at Lewes.

On Saturday, October 18 only, Haywards Heath will be served by a half-hourly Thameslink train service to London and Bedford, in addition to buses.



What are we doing?

Network Rail is replacing worn-out track at Haywards Heath and Keymer Junction, near Wivelsfield. These heavily-used sections of railway were installed 40 years ago and are a cause of delays and speed restrictions. By replacing them we will be able to improve the reliability of trains on the line.

In addition, we are using the time to improve drainage in a tunnel near Haywards Heath and installing a footbridge over the railway near Balcombe.

Thank you

Network Rail route managing director Dave Ward, said: "We know that people want to stay on trains wherever possible and replacement buses are only used where there is no other option. This railway carries a huge number of trains and passengers and we need to make these repairs to improve reliability.

"I'd like to thank passengers for bearing with us this autumn as our work will mean some changes to their travel plans at weekends."



Weekend changes to your journey

*Buses replace trains on
Sept 28, Oct 4,5, Oct 11,12
Oct 18,19 and Nov 15,16*

Information on how your journey will be affected

